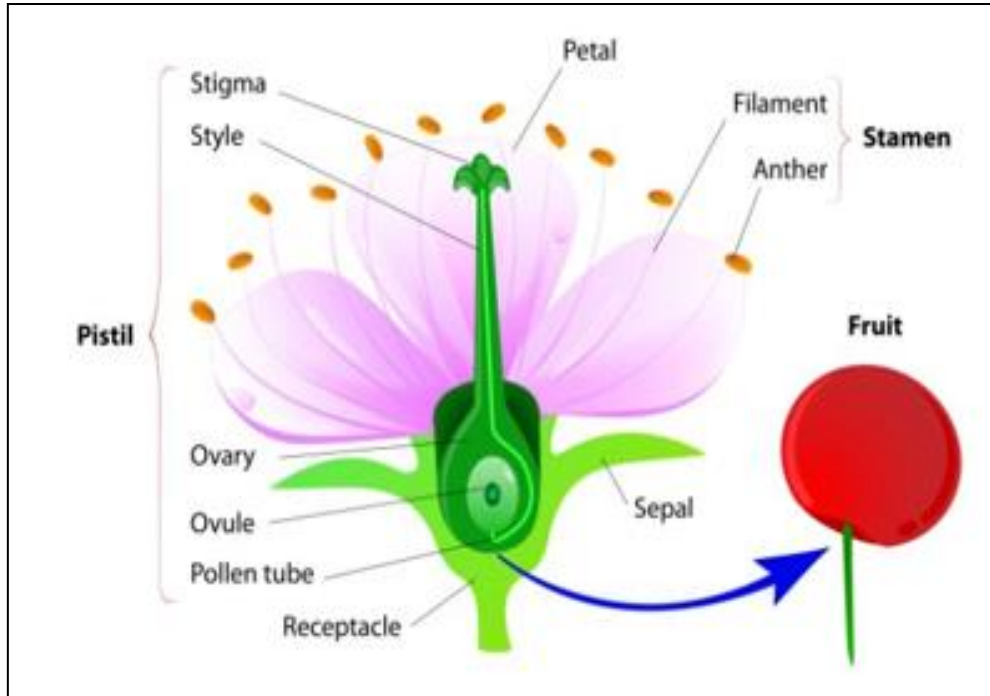


Key Knowledge



I need to know-

- The parts of a plant linked to sexual reproduction and the process of pollination
- That some plants can produce asexually and to know at least two examples (e.g. bulbs dividing, runners, cuttings)
- The life cycles of a frog and a butterfly
- That male animals make sperm and females make eggs
- That when a sperm meets an egg it fertilises it
- For many animals fertilization occurs outside the body
- The meaning of the word extinct and be able to talk about why different animals might become extinct
- What Jane Goodall's work tells us about animals

Key Vocabulary

sexual reproduction	Two parents are needed to make offspring which are similar but not identical to either parent.	life cycle	The journey of changes that take place throughout the life of a living thing including birth, growing up and reproduction.
reproduction	The process of new living things being made.	extinct	Having no living members; no longer being in existence
asexual reproduction	One parent is needed to create an offspring, which is an exact copy of the parent.	naturalists	A person who studies nature and especially plants and animals as they live in nature.
pollination	The transfer of pollen to a stigma to allow fertilization.	fertilise	When an egg and pollen (or sperm) join together.